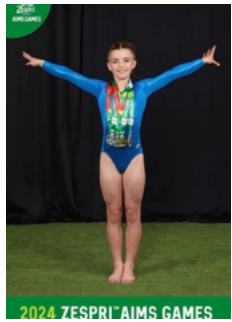


Pānui o te wiki

PUKEKOHE INTERMEDIATE SCHOOL

Term 3 Week 8, 2024



Principal's Messages

Tēnā koutou katoa, Kia orana, Talofa lava, Fakaalofa lahiatu, Malo elelei, Namaste, Aslam Alaykom, Bula vinaka, Ni hao, Ola and Welkom.

This week, ninety of our students had the opportunity to compete at the AIMS Games in Tauranga.

Well done, and a big thank you to Leah McNaughten, Stacey Hurunui, Ann-Maree Woods and the team of staff and parents who have organised, coached, managed teams, prepared lunches and washed laundry over this week.

You have provided such a tremendous opportunity for our students to showcase their talents and achieve their goals in sport.

On Thursday and Friday, I saw our students in action and proudly representing our school. They showed sportsmanship and real team spirit regardless of winning or after a loss.

It was fantastic to see so many of our school whānau on the sidelines to support and cheer on our students.

The atmosphere on the sidelines really lifted our students to give their best.

Many of the images captured over the week will be available on the school's Facebook page, or visit the AIMS Games website for official team and individual photos.

Celebration of the Arts

To celebrate the end of a long and very busy term, our students will showcase their cultural, musical, dance and creative talents and expression with our school community in The Celebration of the Arts.

We look forward to sharing our students' talents with a large audience, so please save the date.

Date: Thursday 26th September
Time: 5:30 pm - 7:00 pm
Venue: Pukekohe Intermediate School Hall

Thank you to Whaea Pip and the student ARTS leadership team for organising this special evening for our students, their whānau and our wider-school community.

Please see the flyer on the community page in this week's newsletter.

Franklin Mathex

Well done to all students selected for the Franklin Schools' Mathex competition Held on Friday last week at the Pukekohe Indian Association Hall.

Thank you to Whaea Lorraine and Whaea Janine for organising this competition. Congratulations to the following teams:

Year 7 competition:

- 1st Intermediate B
- 2nd Intermediate C
- 3rd Intermediate A

Year 8 competition:

- 3rd Intermediate B

Thank you to Lysandra Stuart, president of the Franklin Principals' Association, who was the master of ceremonies for this event.



Pānui o te wiki

PUKEKOHE INTERMEDIATE SCHOOL



Term 3 Week 8, 2024

Haka World Record

On 29 September, up to 10,000 New Zealanders of all cultural backgrounds will meet on the pitch of Eden Park, New Zealand's National Stadium, in the event of a lifetime. We will stage a record-breaking spectacle and stand as a nation to not only reclaim the title but also to raise funds for the Raukauri Music Therapy Trust. [Here's the link to the website](#)

This is about more than just setting the record straight. It is about returning the mana of this world record to the land of its origins, and we will be doing it alongside some of Aotearoa's most celebrated musicians, sporting icons and kapa haka legends.

We invite you to join us.

-Matua Antonio, Lead Māori Teacher



2025 Bilingual Māori Unit

We are excited to announce that applications for the 2025 Bilingual Unit are now open. Please scan the QR code or click on the link below to complete your application.

<https://forms.gle/QtCynnB1u7iaAyiw5>

Applications will close on Friday 8th November.

 Pukekohe Intermediate School

Bilingual Unit

We are excited to announce our new Year 7 and Year 8 Bilingual classes starting in 2025!

Applications Open: Friday 13th September

Applications Close: Friday 8th November

Interviews: from Monday 11th November

Outcome Notification: Friday 15th November

Scan the QR code to access the online application or contact the school



Digital Footprint and Identity

Questions to ask ourselves when navigating the online environment.

How do our actions on social media create a digital footprint and how can we positively shape our digital footprints?

Discussion questions:

- What is a digital footprint?
- What are examples of things that contribute to your digital footprint?
- What can you do in the future to be mindful of your digital footprint and that of others when you use social media?

-Whaea Freya, Digital Technology Teacher

ENVIRO Challenge

As part of our continued sustainability efforts, our school caretakers and student guardians will be monitoring electricity usage in order to reduce our bills.

Please remember to turn off lights, power down devices, and switch off the TV and heat pump when leaving the classroom and at the end of the day.

Congratulations to the **Lomu, Ngata** and **Sheppard** learning communities.

Learning Community	Recycling	LC Area	Bonus
Batten	3	1	
Lomu	4	1	
Ngata	4	1	
Rutherford	2		
Sheppard	4	1	
Te Puea	3		

What's on next week?

Term 3 Week 9

(Monday 16th - Friday 21st September)

Te Wiki o te Reo Māori



Monday

Batten Hub (AM)

Lomu Hub (PM)

Tuesday

Te Puea Hub (AM)

Ngata Hub (PM)

Wednesday

Student Leadership meetings 8 am

Outside Schools HUB

- Buckland School

- KingsGate School

PHS visit Y8 - Hall 12pm

Y8 Assembly - Hall Period 5

William Pike Assembly Booked

Thursday

Rutherford Hub (AM)

Sheppard Hub (PM)

Friday

Passion Projects

HUB Newsletter

Please check your inbox for a copy of our school HUB Newsletter. The HUB Highlights for Rotation 2 were emailed to families on Wednesday 4 September.

Thank you to the HUB team for the mahi in behind getting these prepared to share with whānau.

-Whaea Janine, Deputy Principal of Teaching and Learning

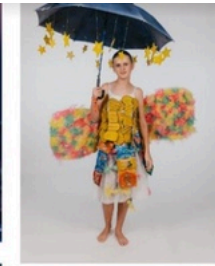
AIMS GAMES



NIWA Science Fair



Celebration of the Arts



 Pukekohe Intermediate
CELEBRATION OF THE ARTS
Thursday 26th September
5.30 - 7.00 PM
School Hall



Community Notices



BASKETBALL SURVEY

We would love to hear from you, the community!



INTERESTED IN TRYING
BASKETBALL??



FRANKLIN ART SHOW 2024

ENTRIES OPEN
22 JULY - 19 AUGUST

OPENING NIGHT
13 SEPTEMBER

EXHIBITION
14-22 SEPTEMBER

ENTER ARTWORK
FRANKLINARTSFESTIVAL.CO.NZ

SECTION THEMES
ABUNDANCE • POP •
CONTRAST • IDENTITY

55 ENTRY • FRANKLIN: THE CENTRE • 12 MASSEY AVE, PUKEKOHE



circa. 1870



The Church today

OPEN DAY

PUKEKOHE EAST CHURCH

The Pukekohe East Church Preservation Society will host an **Open Day** to mark **161 years** since the battle that took place at the Church during the New Zealand Wars.
You can also check out the Pukekohe East School Pet Day in the morning as well.

WHEN: 14th September

TIME: 11:30am - 2:30pm

WHERE: 95 Runciman Road, Pukekohe East