

# Pānui o te wiki

PUKEKOHE INTERMEDIATE SCHOOL

Term 1 Week 2, 2025



## Principal's Message

It is lovely to see our school grounds and classrooms buzzing with energy and enthusiasm. This week, we warmly welcomed another 9 new students to our kura. It is always a pleasure to see new faces joining our school whaanau, bringing fresh energy and contributing to our vibrant learning community.

We look forward to supporting our new ākonga as they settle in, make connections, and thrive both academically and socially. A big thank you to our staff and students for making them feel so welcome.

Reminder: please ensure your tamariki have a water bottle to stay hydrated throughout the day.

### Chinese New Year

This week our student centre displays the Chinese New Year celebration, Year of the Snake. Chinese students from across the school are invited to join Mrs Fryer for a special morning tea in her office this Friday 7th February.



### Property Projects

The School Board is committed to ensuring that all learning spaces and buildings are upgraded to support high-quality learning.

Every property development is aligned with our school's strategic plan, with a strong focus on sustainability, inclusivity, and future-focused learning.

Our goal is to create environments where every student feels valued, inspired, and supported in their learning journey.

Thank you for your ongoing support as we continue to enhance our kura for the benefit of our ākonga, staff, and wider community.

Current project involve; three canopies These will provide much-needed shade and shelter, creating versatile spaces for learning, recreation, and whaanau gatherings, regardless of the weather.

This week, we proudly reopened our purpose-built Arts Block, which was previously used as classrooms.

This newly dedicated arts space is designed to inspire creativity and provide our ākonga with opportunities to explore and develop their artistic talents.

It reflects our commitment to fostering a vibrant, creative environment where students can thrive in the arts.

### Basketball Court

Our basketball courts have undergone a significant upgrade to enhance safety and playability.

Expertly resurfaced and turfed by Tiger Turf, they now feature a high-quality, durable surface designed to support a superior sporting experience.

This upgrade will inspire greater participation in physical education and team sports, encouraging our tamariki to stay active and engaged.

As always, we expect all students using the courts to uphold our HEART values and meet our school's expectations, fostering a positive and respectful environment for everyone.

# Pānui o te wiki

PUKEKOHE INTERMEDIATE SCHOOL



## HUB (specialist classes)

This week, our students had the exciting opportunity to participate in their first HUB lessons. It was wonderful to see their enthusiasm as they engaged in new learning environments, collaborated with their peers, and explored different subjects.

These HUB lessons are designed to foster critical thinking, creativity, and teamwork, providing our tamariki with diverse learning experiences that support their growth both academically and personally. We look forward to seeing how our students continue to thrive in these dynamic learning spaces throughout the term.



## ENVIRO Challenge

Our dedicated caretakers, Matua Ken, Matua Kevin, and Whaea Kirsty, have carefully reviewed our students' recycling efforts to determine this week's ENVIRO Challenge winners. We are proud to announce that the following points have been awarded for outstanding commitment to recycling.

Ka mau te wehi to all our students for your hard work and dedication to protecting our environment! This week's winning Learning Communities are: Batten, Parkside, Rutherford & Sheppard. Ngā mihi nui and congratulations to you all! Keep up the fantastic work—together, we're making a real difference. ♻️🌍

Learning Community	Recycling	LC Area	Bonus
Batten	4	1	1
Hillary	4		
Lomu	1	1	
Parkside	4	1	1
Rutherford	4	1	1
Sheppard	4	1	1
Te Paea	4	1	

## Meet the Teacher

We offer a variety of opportunities for whaanau to engage with their child's learning.

Below is an overview of the formal opportunities we provide for you to connect with your child's progress, both face-to-face and through written reports.

- Term 1: Meet the Teacher
- Term 1: Formal Face-to-Face Learning Conversations
- Term 2: Written Mid-Year Curriculum Level Report
- Term 4: Student-Led Face-to-Face Conferences
- Term 4: Written End-of-Year Curriculum Level Report

You are always welcome to make an appointment with your child's classroom teacher.

We have set aside Tuesday afternoons for staff to be onsite and available for these meetings.

Our first gathering for 2025 is the informal "Meet the Teacher" afternoon, scheduled for Monday, 10 February, from 3:30–5:30 pm.

This is a relaxed opportunity for you to visit the school with your child to meet their teacher. If you prefer, you are also welcome to attend without your child.

No appointments are necessary—feel free to come at any time during the 3:30–5:30 pm window. Gates 1, 3, 4, and 8 will be open for your convenience.

We look forward to seeing you on Monday, 10 February.

*Janine Fryer, Deputy Principal of Teaching and Learning*

## What's on next week?

### Term 1 Week 3

(Monday 10th - Friday 14th February)

*Don't forget to bring your togs for LC swimming sessions*

### Monday

- Batten HUB (AM)
- Sheppard HUB (PM)
- Whanau Meet and Greet 3:30 - 5:30

### Tuesday

- Lomu HUB (AM)
- Hillary HUB (PM)

### Wednesday

- Outside Schools HUB
- Pukekohe North School

### Thursday

- Te Paea HUB (AM)
- Rutherford (PM)

### Friday

- Passion Projects (P3-6)



## Riding, scootering to school

We love seeing our students choosing active transport to and from school, like bikes and scooters. It promotes fitness, independence, and care for the environment.

For safety, please remember:

1. Helmets: Must be worn at all times.
2. Road Safety: Know the road rules and ride safely.
3. Parking: Use designated bike/scooter racks.
4. Consideration: Ride safely, respect pedestrians, and dismount in busy areas.

Thank you for supporting safe journeys to and from school.

# Pānui o te wiki

## PUKEKOHE INTERMEDIATE SCHOOL

### Attendance Matters – Introducing STAR (Stepped Attendance Response)

At Pukekohe Intermediate, we are committed to supporting every student's success, and regular attendance plays a crucial role in this. To strengthen our approach, we've adopted the STAR (Stepped Attendance Response) framework, which helps us respond effectively to attendance concerns in a supportive and consistent way.

#### What is STAR?

STAR is designed to identify and address attendance issues early. It involves a series of proactive steps:

- ★ Monitoring: Regular tracking of attendance to spot patterns early.
- ★ Communication: Engaging with whaanau to understand any barriers to attendance.
- ★ Support: Offering tailored support to students and families to improve attendance.
- ★ Action: Working with external agencies when needed to provide additional help.

#### Attendance and School Opportunities

To represent Pukekohe Intermediate in sports teams, cultural groups, leadership roles, and other extracurricular activities, students are expected to maintain a minimum of 85% attendance. This ensures students are fully engaged with their learning and able to balance their commitments effectively.

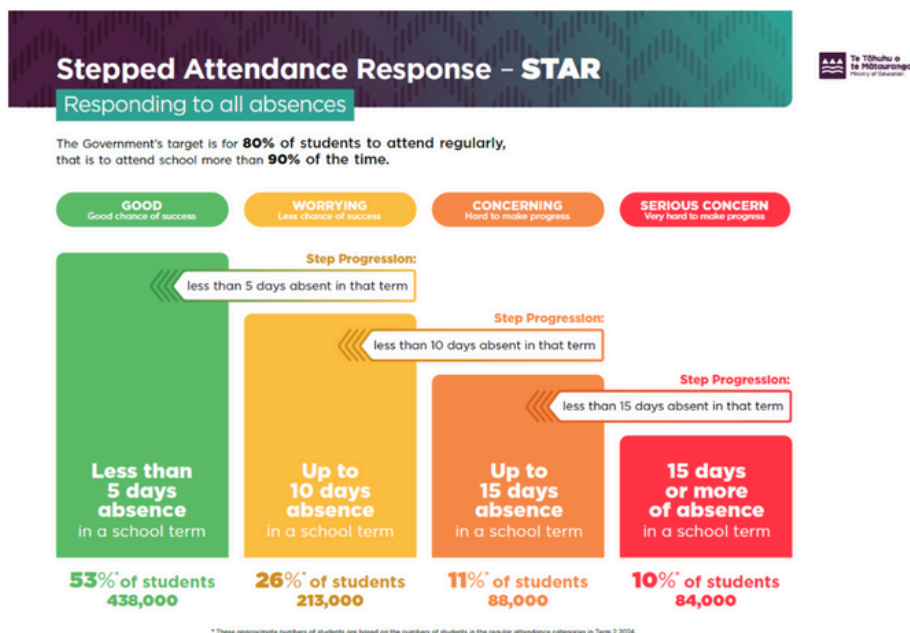
#### Reporting Absences and Extended Leave

We kindly ask whaanau to contact the school each day your child is absent to help us keep accurate attendance records. If you are planning any extended leave, please send your request directly to your child's classroom teacher. You will receive an Extended Leave Application Form to complete and return to school. To support the planning and organisation of your child's learning, we ask that these requests be submitted at least two weeks in advance.

#### Franklin Attendance Officers (FAS)

Our Franklin Attendance Officers play an important role in supporting students to re-engage with their learning. They will be visiting the homes of students who are not attending school on a regular basis. These visits are intended to understand the reasons behind absences and to work with whaanau to find solutions that support regular attendance.

Regular school attendance keeps students connected with their learning, friendships, and school activities. We encourage whaanau to reach out if your child is facing challenges with attendance. Together, we can support our young people to thrive.



# Community Messages

Seasons For Growth is a grief, loss and change programme for children dealing with challenges in their lives e.g separation, divorce, death, other family changes. Our after school programme starts this term on Thursday 13th February 4-5pm, held in Pukekohe running once a week over 8 weeks. An optional parent programme also runs at the same time. For enquiries or enrolments please phone/text Marisa Skilton 021 142 5812, office (09) 238 7228, or contact me at [seasonsfranklin@xtra.co.nz](mailto:seasonsfranklin@xtra.co.nz)

For more info please go to [www.pukekohecommunityaction.co.nz/seasons](http://www.pukekohecommunityaction.co.nz/seasons)



**FRANKLIN** AGRICULTURAL & PASTORAL SOCIETY

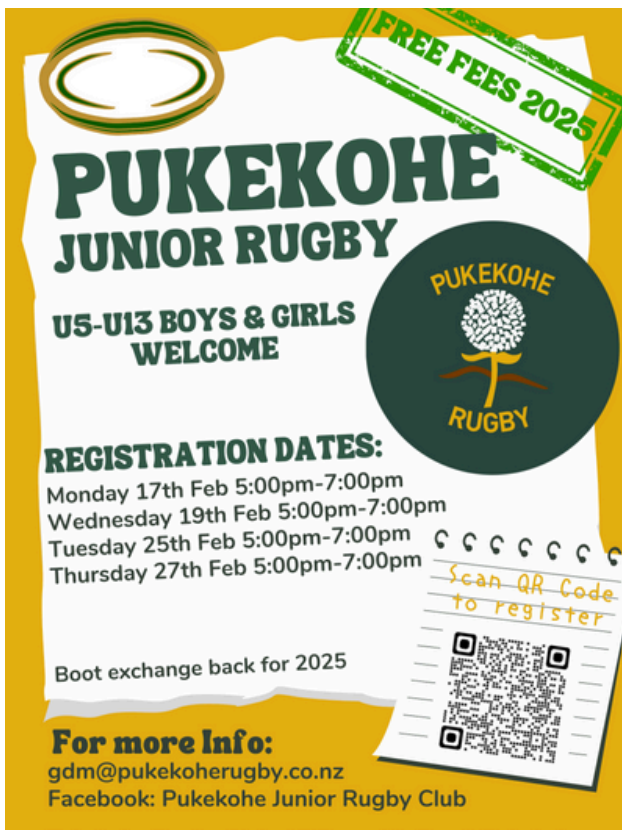
PUKEKOHE SHOWGROUNDS, 58 STATION ROAD, PUKEKOHE

## PUKEKOHE SHOW

15 and 16 February

- Great Family Fun!
- Tractors and Farm Equipment
- Vintage Machinery
- Animals
- Entertainment
- Food
- Inflatable Rides
- Trade Stalls
- Arts and Crafts

Supported by 



**FREE FEES 2025**

## PUKEKOHE JUNIOR RUGBY

U5-U13 BOYS & GIRLS WELCOME

**REGISTRATION DATES:**  
Monday 17th Feb 5:00pm-7:00pm  
Wednesday 19th Feb 5:00pm-7:00pm  
Tuesday 25th Feb 5:00pm-7:00pm  
Thursday 27th Feb 5:00pm-7:00pm

Scan QR Code to register

Boot exchange back for 2025

**For more info:**  
[gdm@pukekoherugby.co.nz](mailto:gdm@pukekoherugby.co.nz)  
Facebook: Pukekohe Junior Rugby Club



## Haramura Fundraiser

The Japan 2025 group are selling Pepper & Me as a fundraiser.

Buy from their website ([Your paragraph text](#)) and use the code **FUNDPI24**.

The group will receive 20% of every order to go towards their trip in September.

The code is valid for all of February.



## Fundraising Programme

Simply use the code

*This is your code*

**FUNDPI24**

and **20% of all sales** using the code will be donated to support

**Pukekohe Intermediate Japan Group**

At checkout please use the code above. Valid from 03/02/25 to 28/02/25. Excludes Pepper Post.

*Fundraising made delicious!*

Check us out at [pepperandme.co.nz](http://pepperandme.co.nz)